

Crystal Reports 2008 – Frequently Asked Questions

Contents

Crystal Reports 2008 Overview	1
Enterprise Functionality.....	1
Product & Packaging.....	2
Availability	3
Licensing & Runtime	3
Report Engines and SDKs	4
Compatibility with Earlier Versions.....	4
Training	5
Technical Support	5

Crystal Reports 2008 Overview

Crystal Reports® 2008 is the latest release of Crystal Reports. It is a flexible and innovative reporting solution that enables interactive report consumption and superior visualization – deployable in any business setting.

Q: Why is everyone so excited about Crystal Reports 2008?

A: The release of Crystal Reports 2008 has completely redefined the reporting experience. Benefits include:

- Flexible, interactive report viewing
- More persuasive and professional-looking reports with stunning visualization
- New, comprehensive deployment options
- Reduced report proliferation and maintenance
- Advanced report design power
- Reduced design time & improved designer productivity

New Crystal Reports 2008 delivers advanced functionality to help reduce report proliferation and maintenance, build increasingly powerful reports, and save time with high-productivity design features. You can find more information in the same report with interactive features such as report sorting, reformatting and parameter filtering. You will be able to create visually compelling data presentations by easily embedding powerful Xcelsius and Flash graphics. You will be able to save time by inserting summary, variance and any other custom calculation into a crosstab row or column without any coding.

Enterprise Functionality

Q: Will Crystal Reports 2008 work with my current Crystal Reports® Server, BusinessObjects™ Enterprise, or BusinessObjects™ Edge Series (formerly BusinessObjects Crystal Decisions)?

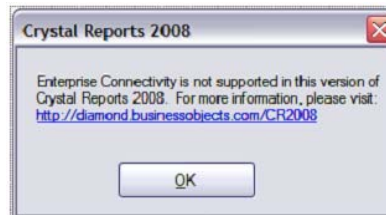
- A:**
- Although RPT files authored in Crystal Reports 2008 are compatible with all XI and XI Release 2 servers, the new features in Crystal Reports 2008 will be ignored when these files are deployed to these servers.
 - The Crystal Reports 2008 report designer is unable to log into these servers. This means the functionality that depends on an enterprise session is unavailable. If you are using one of these report servers, we recommend you use the Crystal Reports XI report design tool until the next generation of enterprise servers is available.

Q: When will the next generation of enterprise servers be available?

- A:**
- The servers noted above will receive upgrades during 2008 that fully support the Crystal Reports 2008 report design and report deployment features.

Q: What will happen if I attempt to use an Enterprise feature with Crystal Reports 2008?

- A:**
- If you attempt to log-on to Enterprise (Enterprise-related menus will not be disabled), you will be presented with a dialog box similar to this:



Q: How will the enterprise features be enabled for Crystal Reports 2008?

- A:**
- We will provide a free service pack that will enable these features.

Q: Exactly what enhancements will the service pack provide?

- A:**
- All Enterprise related functionality, including:
 - Report publishing and scheduling
 - "Save As" to and Enterprise folder
 - HTML Preview Pane
 - Business Views and Universes
 - Hyperlinking Wizard
 - Repository Explorer

Product & Packaging

Q: What will ship in the Crystal Reports 2008 kit?

- A:**
- Crystal Reports 2008 is comprised of a single CD.

Q: Why is Crystal Reports 2008 only a single CD when previous versions have required multiple CDs?

- A:**
- Based on customer feedback for a smaller, faster installation – we have removed optional product elements from the CD so that the core product on the CD is now just 300 MB. These optional elements will now be provided by download.
 - This smaller size will provide for a faster and more efficient installation.

Q: So what is on the CD and what is available via download?

- A:**
- Here's how it breaks down:

On the CD (about 300 MB total size):

- Crystal Reports 2008 report designer including all database drivers, exports, charting and mapping
- Translations for all languages for the designer only (resource DLLs)
- Online help for all languages
- Template RPT files for all languages
- Crystal Reports 2008 for Visual Studio. This provides Visual Studio integration for .NET 1.1 and 2.0 and Visual Studio 2003 and 2005

Available from the Website only:

- Sample database
- Sample reports

.NET Developer downloads:

- Merge modules and MSIs for all languages (includes support for the Inproc RAS API)
- .NET SDK documentation for English and Japanese

Java Developer downloads:

- Crystal Reports for Eclipse designer
- Java SDK documentation

Q: What are the system requirements for Crystal Reports 2008?

- A:**
- System Requirements for Crystal Reports 2008 include:
 - Intel® Pentium® III or equivalent processor
 - 256 MB RAM, 512 Recommended
 - 300 MB available hard drive space, 600 MB recommended with Visual Studio .NET integration
 - CD-ROM (for CD install only)

Q: Will Crystal Reports 2008 include the same Crystal Reports Server promotional offer (5 named user licenses) that was included with Crystal Reports XI?

- A:**
- We will consider including a similar promotional offer when the next generation of Crystal Reports Server is available.

Q: In which languages will Crystal Reports 2008 be available?

- A:**
- Crystal Reports 2008 is available in 12 supported languages (Chinese-Simplified, Chinese-Traditional, German, Dutch, English, Spanish, French, Italian, Japanese, Korean, Brazilian Portuguese, and Swedish).

Availability

Q: When will Crystal Reports 2008 ship?

- A:**
- Crystal Reports 2008 is scheduled to ship in early November. Due to popular demand, Crystal Reports 2008 will be available for pre-order (before the shipping date) at any of the purchase sources noted below. Call us direct for more information at 1.800.333.6007.

Q: Where can I buy it?

- A:**
- Crystal Reports 2008 will be available through our on-line store, direct purchase by telephone, and through resellers. Call us direct for more information at 1.800.333.6007.
 - To see a list of Crystal Reports 2008 resellers visit www.businessobjects.com/resellers.

Q: What editions will be available?

- A:**
- Crystal Reports 2008 will be available in a single edition, called – quite simply – Crystal Reports 2008. This new, single edition has features equivalent to that of the Developer edition (the most comprehensive feature set of all of the previous editions).

Q: How much will it cost?

- A:**
- Pricing varies by region. Please contact us at 1.800.333.6007 for pricing details or visit your preferred reseller.

Licensing & Runtime

Q: How does the user license relate to the Crystal Reports 2008 designer?

- A:**
- Each kit of Crystal Reports 2008 includes one named user license that allows a single individual to install the Crystal Reports designer on their local machine to create reports. Users may not share this license among multiple individuals.

Q: Since the Crystal Reports 2008 feature set is based upon the previous Developer edition, will it include the same report engine distribution license?

- A:**
- Yes. Thick client applications can be freely redistributed internally and externally.
 - Thin client applications can be distributed internally (within your organization) with no additional licensing.

Q: What if I want to redistribute a thin client application externally

- A:**
- If you build client-server or web applications that will be redistributed, sold, or deployed to a third party, you must purchase a copy of Crystal Reports 2008 for each company you redistribute to. Volume pricing may also be available through the Business Objects Dimensions Program or the Business Objects OEM Partner Program.

Report Engines and SDKs

Q: What report engines and viewers are included with Crystal Reports 2008?

- A:**
- The following components can be used for integrating Crystal Reports into your applications:
 - .NET Report Engine Component with either a merge module (MSM) or MSI file for choice of deployment options.
 - .NET Win and WebForm viewers
 - .NET SDK with the Report Creation API set for report creation and modification.
 - Available via download from the Crystal Reports 2008 Start page

Q: Which features work with which viewers?

- A:**
- All new Crystal Reports 2008 features work with all viewers, with the following exceptions:
 - .NET webform viewer: Supports interactive sorting, parameter panel, and embedded Flash.
 - .NET winform viewer: Supports interactive sorting and the parameter panel.
 - Active X viewer: Similar functionality to Crystal Reports XI Release 2

Q: Where is the JRC? I want to integrate Crystal Reports with my Java application.

- A:**
- The latest version of the Java Reporting Component is in Crystal Reports for Eclipse, which is a free download from <http://diamond.businessobjects.com/eclipse>. It will be upgraded to support most of the Crystal Reports 2008 features later in 2008.

Q: Where is the RDC? I want to integrate Crystal Reports with my COM application.

- A:**
- For COM based application development we recommend Crystal Reports XI Release 2. This includes the RDC and is a free upgrade from Crystal Reports XI.

Q: Is it true that the Crystal Reports COM engine (also known as the RDC) will be retiring?

- A:**
- Yes this is consistent with our statement of direction, available at: http://resources.businessobjects.com/support/communitycs/technicalpapers/RDC_statement_of_direction.pdf
 - We recommend Crystal Reports XI Release 2 for COM-based report development.

Compatibility with Earlier Versions

Q: Can I install Crystal Reports 2008 on the same machine as my existing Crystal Reports?

- A:**
- Yes. Crystal Reports is side-by-side compatible and will install beside your existing Crystal Reports version without impacting it.

Q: Can Crystal Reports 2008 read my older RPT files?

- A:**
- Yes. Crystal Reports 2008 will read RPT files from version 7 or newer.

Q: Can Crystal Reports 2008 RPT files be read by my older Crystal Reports designer or application?

- A:**
- Yes. Crystal Reports 2008 RPT files can be read and executed by the previous two versions of Crystal Reports – versions 10 and XI.
 - New features in Crystal Reports 2008 will be ignored by the older version of the RPT engines.

Training

Q: What training is available for Crystal Reports 2008?

- A:**
- Details on training offerings for Crystal Reports can be viewed on our website at www.businessobjects.com/training.

Technical Support

Q: What type of support is included with Crystal Reports 2008?

- A:**
- Customers who register will be provided with access to complimentary support via our Crystal Assist program. This includes unlimited installation email support as well as unlimited access to our self-serve support website. More information about Crystal Assist can be found at <http://support.businessobjects.com/assist>.
 - **NOTE:** If you do not register, you will not have access to this complimentary support service.

Q: How can I obtain additional support?

- A:**
- Additional support offerings are available for purchase. Please visit our website for further details.