

PRODUCTS

BusinessObjects Composer

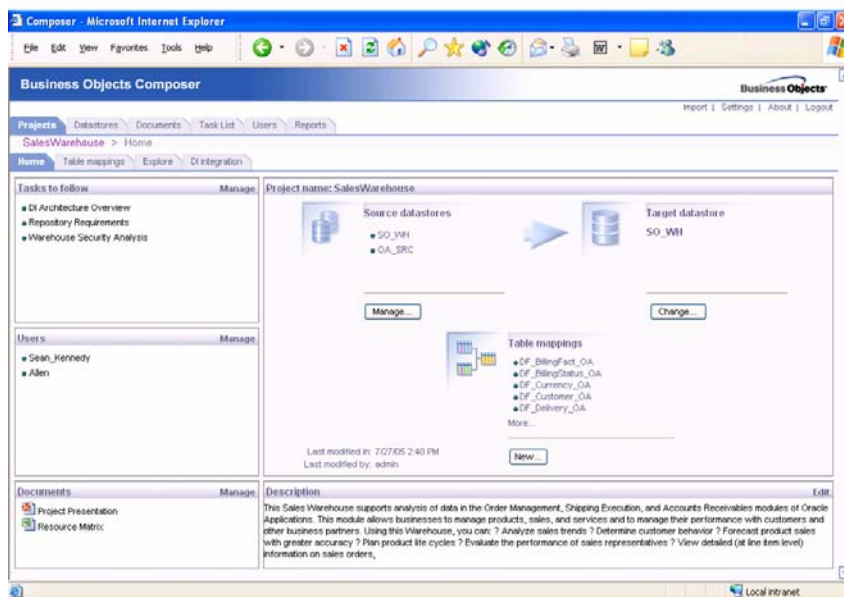
Accelerate ETL Design and Improve Data Quality

“The logical data map is the lifeline of the ETL team.”

-Ralph Kimball
The Data Warehouse ETL Toolkit

Designing and implementing a data warehouse is a complicated and resource-intensive IT project. The most critical part of such an undertaking is the extract, transform, and load (ETL) design process. It's often plagued by many disparate data sources, lack of organizational knowledge of source systems, and unexpected data-quality issues.

With web-based BusinessObjects™ Composer, your IT team can efficiently design and manage bulletproof ETL processes. Composer has been designed to complement BusinessObjects Data Integrator, the most productive and scalable data integration platform on the market. It's also the only product on the market to address the costly and non-systematic processes associated with ETL design, implementation, and maintenance.



Composer allows you to efficiently design ETL processes to improve the quality of data integration projects.

For current or planned data warehousing projects, Composer provides your IT staff with:

- Bulletproof ETL design
- Project documentation and collaborative design
- The ability to validate and generate ETL jobs

Bulletproof ETL Design

Data warehousing initiatives involve complicated source system identification and a process of mapping source data to the target system.

Without an up-front, well-thought ETL design, you may face cost overruns, questionable data quality, and, ultimately, user rejection. Composer addresses these issues by providing efficient ETL design capabilities and an understanding of the data mappings before implementing and executing ETL jobs. You can systematically define ETL projects, sources, targets, and mappings. Composer also includes data profiling to help you examine the structure and quality of source data so you can better design your ETL jobs and incorporate data quality checks into them before building your target warehouse. Modifiable task lists can provide a standard or custom workflow for design and project completion:

1. Review target data model
2. Identify source systems
3. Analyze and profile source systems
4. Document source data defects and anomalies
5. Define business rules required for the project
6. Define data quality rules
7. Develop mappings for the target tables
8. Integrate business and quality rules with mappings

Developing these higher-level designs for your projects makes ETL design more efficient and improves the quality of resulting ETL jobs.

Project Documentation and Collaborative Design

Successful data warehousing projects require many organizational constituents— including personnel from IT and business units throughout the organization— to work together. Without an organized framework for sharing critical project-specific ETL design knowledge, many warehouse initiatives won't even get off the floor.

From its intuitive web interface, Composer gives distributed technical and business project members a collaborative way to document, share, and track the processes and progress of ETL design. Composer provides a single location to store and access all project documents. Version control and other document-management features allow for sharing and co-development. You can track project status via overview reports that detail data store information, task lists with completion dates and users, and more.

The Ability to Validate and Generate ETL Jobs

At the completion of ETL design, you can validate your work by running reports that describe data lineage, mappings, data-store structures, users, and documentation. You can also browse and explore database and other project metadata. For example, you can explore table relationships including views for lineage and impact, star schemas, or location of a table in the project. Composer also generates Data Integrator jobs in a one-step process that captures all the mappings and structure of the design.